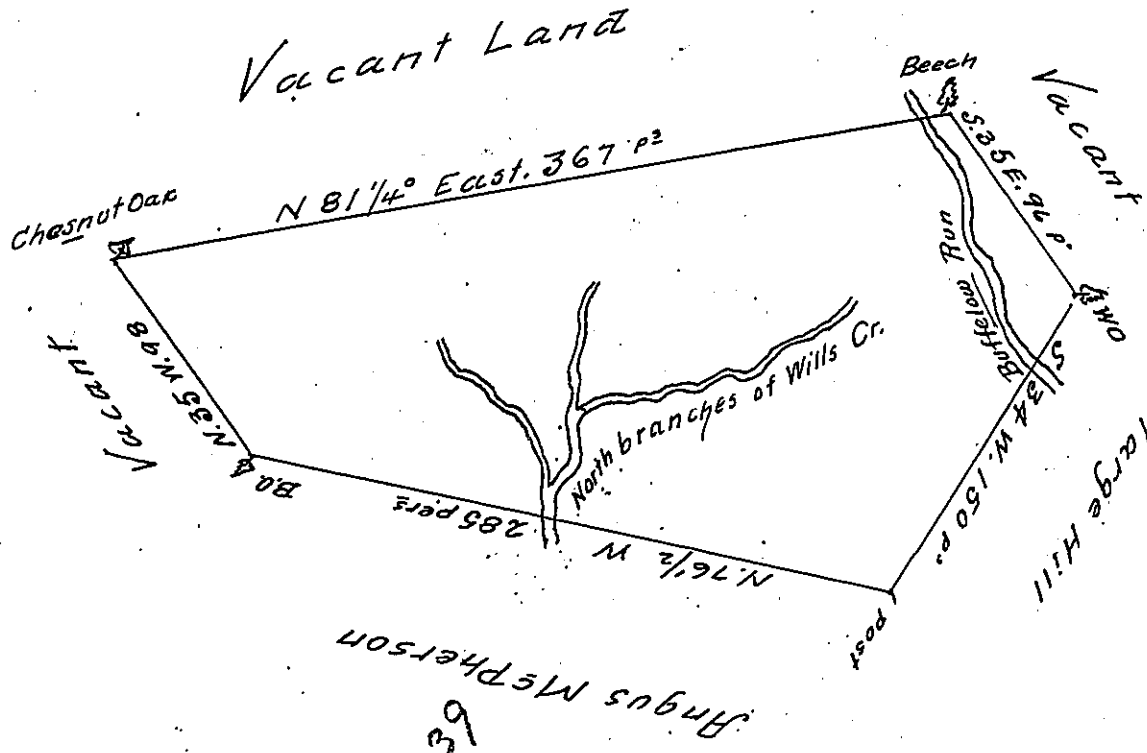


C-28-75



Angus McPherson
65.5
0

A Draught of a Tract of Land situate on the heads of the
 North branch of Wills's Creek in the County of Cumberland.
 Containing Three hundred and five acres and three quarters
 and the usual allowance of six acres p cent for roads &c
 Surveyed the 27th day of November 1766 for Alexander Fraser
 in pursuance of an ^{Order} ~~Warrant~~ dated the first day of August 1766
 N^o 352

Richard Tea Depl. Surveyor

To John Lukens Esq. Survey General.

IN TESTIMONY that the above is a copy of the original remaining on file in
 the Department of Internal Affairs of Pennsylvania, made
 conformably to an Act of Assembly approved the 16th day of
 February, 1833, I have hereunto set my Hand and caused
 the Seal of said Department to be affixed at Harrisburg,
 this twenty-third day of November 1905

George D. Brown
 Secretary of Internal Affairs.